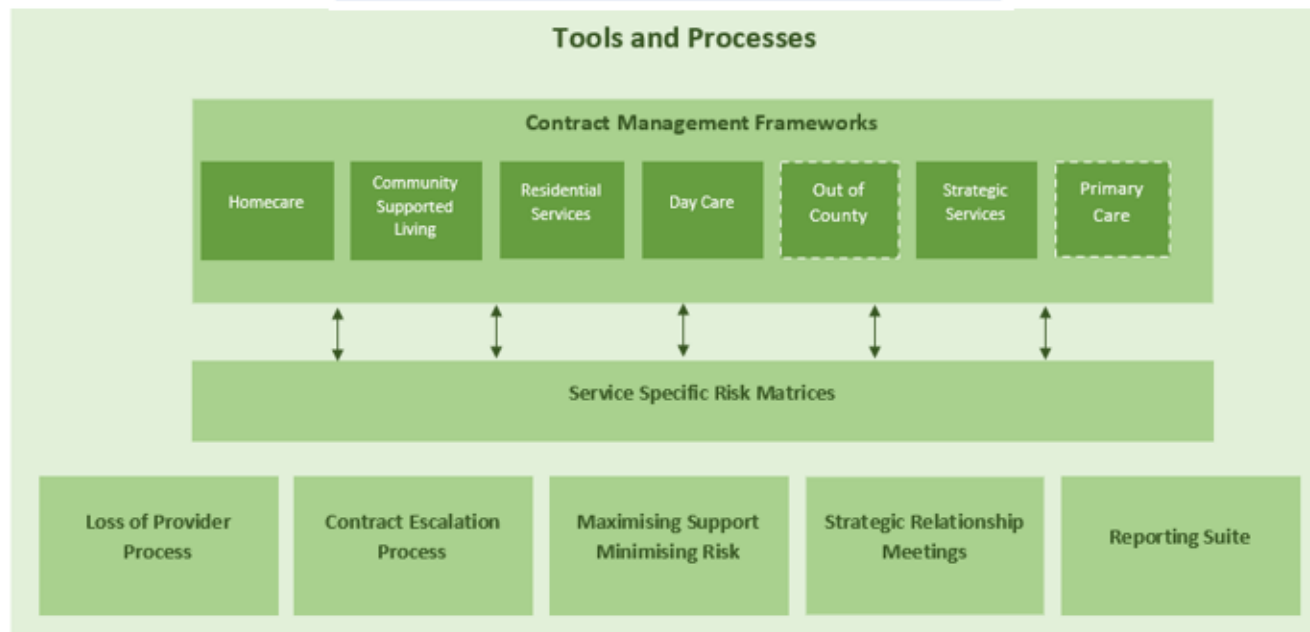
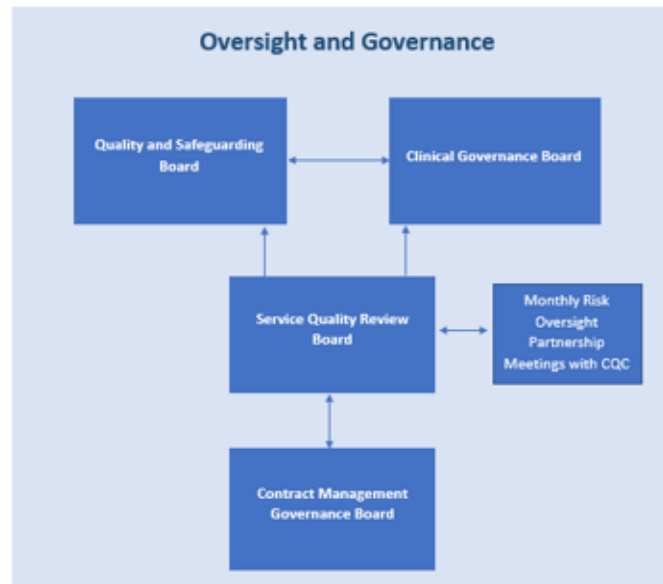


Commercial Team People Services Contract Management Team

"Supporting commissioned providers to deliver effective services for Lincolnshire"

- Collaboration Partners**
- Service users
 - Providers
 - Care Quality Commission
 - Better Lives Lincolnshire (ICS)
 - Primary Care
 - Quality Assurance Team
 - Health Protection Team
 - Service Area Commissioners
 - Operational Teams
 - Adult Care Performance
 - Service Development Team
 - Brokerage Team
 - Safeguarding Team
 - Internal Audit
 - Finance Team
 - Legal Team
 - Procurement Team
 - Lincolnshire Fire & Rescue
 - Lincolnshire Resilience Forum
 - Lincolnshire Police
 - ADASS
 - Skills for Care
 - Lincolnshire Care Association
 - Elected Members



- Intelligence**
- Poor Practice Concerns
 - Safeguarding Alerts
 - Serious Incident Reports
 - Partner Assurance Reports/Visits
 - Service user feedback
 - Provider/Contract Data
 - Third Party Feedback

Appendix B

This page is intentionally left blank